

PRODUCT DATA SHEET

SikaRoof® VersiPave® Chock Extender

CHOCK EXTENDER FOR ADJUSTABLE STEPJACK PEDESTAL SYSTEM FOR RAISED PAVERS FLOORING

DESCRIPTION

SikaRoof® VersiPave® Chock Extender is an extender for chocks of SikaRoof® VersiPave® to generate more paver support at the corners. Chock extenders are manufactured from recycled polypropylene (PP), while fire-rated chock extenders are manufactured from modified reinforced thermoplastics, and is inserted into the chocks of SikaRoof® VersiPave® at higher heights to prevent porcelain pavers from flipping if a downward point force is applied to the paver's corner.

USES

Additional paver support for stepjack pedestal system for podiums, balconies, roof terraces and areas with hardscape finishes.

PRODUCT INFORMATION

Packaging

- SikaRoof® VersiPave® Chock Extender
 - SikaRoof® VersiPave® Chock Extender FR
- Refer to pricelist

CHARACTERISTICS / ADVANTAGES

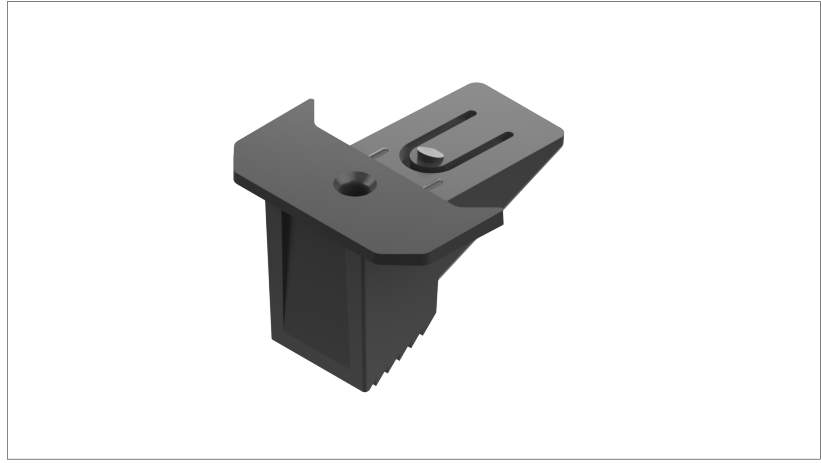
- Recyclable components
- Resistant to biological attack by moulds and algae
- Chemically resistant to acids, alkalis, oils and soil chemicals
- Operates within a wide service temperature range

APPROVALS / STANDARDS

Singapore Green Building Product (Leader) Cert. No. SGBP 3254

Appearance / Colour

Black triangular prism stepjack chock



Shelf Life

No expiration date if the product is stored in accordance to the storage conditions as stated in this Product Data Sheet.

Storage Conditions

Product must be stored in their original packing, and under cool and dry conditions. The product must be protected from direct sunlight, rain, snow and ice, and any other elements.

Length

Chock Extension Length
16 mm

TECHNICAL INFORMATION

Reaction to Fire

SikaRoof® VersiPave® Chock Extender FR

Toxicity Emission CIT < 0.75 (BS EN 45545-2)

Smoke Density s1 (BS EN 13501-1)

Fire Spread Class B_{fl} (BS EN 13501-1)

Service Temperature

SikaRoof® VersiPave® Chock Extender

- 30 °C to 80 °C

SikaRoof® VersiPave® Chock Extender FR

- 30 °C to 115 °C

BASIS OF PRODUCT DATA

All technical data stated in this Product Data Sheet are based on laboratory tests. Actual measured data may vary due to circumstances beyond our control.

IMPORTANT CONSIDERATIONS

- SikaRoof® VersiPave® Chock Extender is not resistant to permanent weathering and UV exposure. For more information, please contact Sika Sales Personnel.

ECOLOGY, HEALTH AND SAFETY

This product is an article as defined in article 3 of regulation (EC) No 1907/2006 (REACH). It contains no substances which are intended to be released from the article under normal or reasonably foreseeable conditions of use. A safety data sheet following article 31 of the same regulation is not needed to bring the product to the market, to transport or to use it. For safe use follow the instructions given in this product data sheet. Based on our current knowledge, this product does not contain SVHC (substances of very high concern) as listed in Annex XIV of the REACH regulation or on the candidate list published by the European Chemicals Agency in concentrations above 0.1 % (w/w)

APPLICATION INSTRUCTIONS

SUBSTRATE PREPARATION

Clean and sound surface shall have at least a wood float finish. All holes, joints, and cracks and honeycombs in concrete or masonry surfaces shall be filled with an approved grout and allowed to cure. High spots in concrete or masonry surfaces shall be cut off or ground down to prevent damage/puncture to the pedestal base.

APPLICATION

SikaRoof® VersiPave® Chock Extender is inserted into the chocks of SikaRoof® VersiPave® for added paver support, which shall be loosely laid without any mechanical fixing either on top of the waterproofing membrane or on top of the concrete surface. For a bonded application, the pedestal may be adhered to the substrate with an approved adhesive. The first paver shall be installed to the correct elevation before using a levelling device to serve as a reference. Subsequent pavers shall be installed and checked to ensure consistent and correct elevation, till a sturdy and rigid raised flooring is obtained, free of rattling, squeaking or other noises.

LEGAL NOTES

The information, and, in particular, the recommendations relating to the application and end-use of Sika products, are given in good faith based on Sika's current knowledge and experience of the products when properly stored, handled and applied under normal conditions in accordance with Sika's recommendations. In practice, the differences in materials, substrates and actual site conditions are such that no warranty in respect of merchantability or of fitness for a particular purpose, nor any liability arising out of any legal relationship whatsoever, can be inferred either from this information, or from any written recommendations, or from any other advice offered. The user of the product must test the product's suitability for the intended application and purpose. Sika reserves the right to change the properties of its products. The proprietary rights of third parties must be observed. All orders are accepted subject to our current terms of sale and delivery. Users must always refer to the most recent issue of the local Product Data Sheet for the product concerned, copies of which will be supplied on request.

Sika (Singapore) Pte Ltd.

28 Tuas South Ave 8

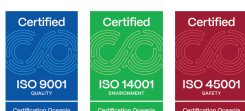
Singapore 637648

Phone: +65 6861 0632

Fax: +65 6862 3915

Email: sales@sg.sika.com

www.sika.com.sg



Product Data Sheet

SikaRoof® VersiPave® Chock Extender

May 2026, Version 01.02

020945051990244815

SikaRoofVersiPaveChockExtender-en-SG-(05-2026)-1-2.pdf