

PRODUCT DATA SHEET

SikaRoof® VersiWall GP 2020

PLANTING POT FOR WALL MOUNTED LANDSCAPE GREENING

DESCRIPTION

SikaRoof® VersiWall GP 2020 is a planting pot that may be mounted onto walls to create green wall facades. Planting pots are manufactured from recycled polypropylene (PP), and it has an internal reservoir, an overflow outlet that transfers excess water directly to subsequent planting pots below, and holders for an irrigation line.

SikaRoof® VersiWall GP 2020 is used in conjunction with SikaRoof® VersiWall GP Panel or a steel wire mesh with its in-built hooks to create a green wall system.

USES

Planting pots are used to create green walls on either internal or external wall facades.

CHARACTERISTICS / ADVANTAGES

- Internal reservoir
- Irrigation line holders
- Resistant to biological attack by moulds and algae
- Chemically resistant to acids, alkalis, oils and soil chemicals
- Operates within a wide service temperature range

APPROVALS / STANDARDS

Singapore Green Building Product (Leader) Cert. No. SGBP 3256

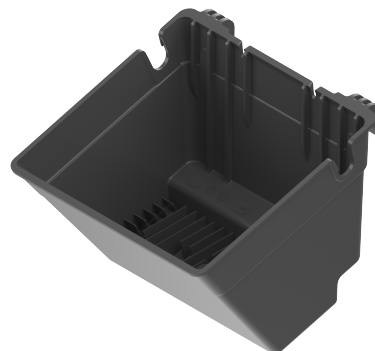
PRODUCT INFORMATION

Packaging

- SikaRoof® VersiWall GP 2020
- Refer to pricelist

Appearance / Colour

Black planting pot



Shelf Life	No expiration date if the product is stored in accordance to the storage conditions as stated in this Product Data Sheet.
Storage Conditions	Products must be stored in their original packing, in their original box, and under cool and dry conditions. The product must be protected from direct sunlight, rain, snow and ice, and any other elements.
Dimensions	200 x 205 x 150 mm

TECHNICAL INFORMATION

Service Temperature	- 30 °C to 80 °C
Volume	Planting Media Volume 2.5 L

BASIS OF PRODUCT DATA

All technical data stated in this Product Data Sheet are based on laboratory tests. Actual measured data may vary due to circumstances beyond our control.

IMPORTANT CONSIDERATIONS

For more information, please contact Sika Sales Personnel.

ECOLOGY, HEALTH AND SAFETY

This product is an article as defined in article 3 of regulation (EC) No 1907/2006 (REACH). It contains no substances which are intended to be released from the article under normal or reasonably foreseeable conditions of use. A safety data sheet following article 31 of the same regulation is not needed to bring the product to the market, to transport or to use it. For safe use follow the instructions given in this product data sheet. Based on our current knowledge, this product does not contain SVHC (substances of very high concern) as listed in Annex XIV of the REACH regulation or on the candidate list published by the European Chemicals Agency in concentrations above 0.1 % (w/w)

LEGAL NOTES

The information, and, in particular, the recommendations relating to the application and end-use of Sika products, are given in good faith based on Sika's current knowledge and experience of the products when properly stored, handled and applied under normal conditions in accordance with Sika's recommendations. In practice, the differences in materials, substrates and actual site conditions are such that no warranty in respect of merchantability or of fitness for a particular purpose, nor any liability arising out of any legal relationship whatsoever, can be inferred either from this information, or from any written recommendations, or from any other advice offered. The user of the product must test the product's suitability for the intended application and purpose. Sika reserves the right to change the properties of its products. The proprietary rights of third parties must be observed. All orders are accepted subject to our current terms of sale and delivery. Users must always refer to the most recent issue of the local Product Data Sheet for the product concerned, copies of which will be supplied on request.

Sika (Singapore) Pte Ltd.

28 Tuas South Ave 8
Singapore 637648
Phone: +65 6861 0632
Fax: +65 6862 3915
Email: sales@sg.sika.com
www.sika.com.sg



Product Data Sheet

SikaRoof® VersiWall GP 2020
December 2025, Version 01.01
020945051990244784

SikaRoofVersiWallGP2020-en-SG-(12-2025)-1-1.pdf